

fresh thinking

The new council tax

financing local government - a trailer for tax evolution

The New Council Tax - the new way to pay for the public services we receive.

It's the evolution of the old Council Tax and Business Rates which it replaces.

It's not a tax on people who work like a local income tax would be. (Because who wants to discourage people working?)

It's not a tax on enterprise like business rates was. (Because who wants to discourage business?) It's not even a tax on your property. (Because who wants to discourage better property?) - it's a fair charge for what the community gives your property. After all, your surrounding community adds value to your property.

The New Council Tax - the new fair way to pay for public services.

Best locations will pay most. They receive most from the community. Less desirable locations will pay less. Because they end up benefiting less.

Does your property enjoy a near-by high-league school? - views over a grassy park? - handy parking? - tree-lined streets? - a safe and clean neighbourhood? - good roads and transport? We need to pay for those. So you pay more. It's your due.

Or are you finding there are less quality affordable public services paid on near-by you? Do you have to deal with a less desirable location? - less convenience, less benefit? - more disadvantage, more things you'd rather not have to deal with? - are

you miles from good public services? You pay less: you're receiving less.

It's a matter of choice. Make your choice, make your move, and pay your due.

Low tax locally means run-down areas will soon become regenerated. Rural and marginal areas will thrive as their tax burden is reduced.

Enjoying greater wealth from your community means paying progressively to it. You pay into the community for what you get out of the community.

The New Council Tax - the new fair way to pay for public services.

2 ways to pay - easy and convenient.

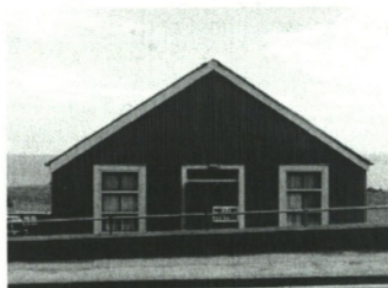
Pay as you go, monthly or annually, by direct debit or cheque. If you're a working family you might choose to pay this way.

If you're a business you might also choose this option.

Or lump sum when you sell - your solicitor will make the arrangements. If you're on low income enjoying a higher value location - perhaps a pensioner - you may be able to pay this way. If you're a start-up business you may also be able to defer.

2 easy ways to pay - it's your choice.

The New Council Tax - it's the new fair way to pay for the public services we receive.



the **NEW**
COUNCIL
TAX It's the new fair way
to pay for the public services we receive

