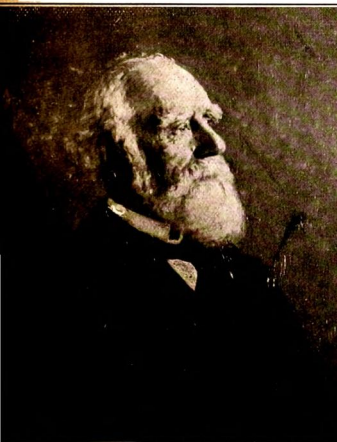


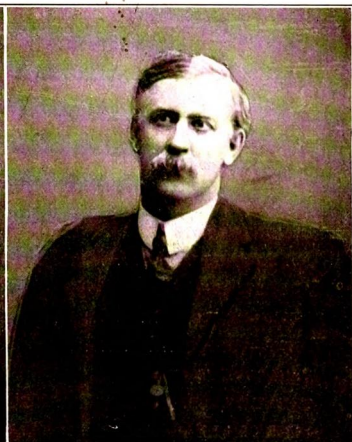
Edmonton and Grain Growers

THE SINGLE TAX REVIEW

A Bi-Monthly Record of the Progress of Single Tax and Tax Reform Throughout the World



LORD STRATHCONA AND MOUNT ROYAL, WHOSE STRONG DOMINATING PERSONALITY TYPIFIES THE MOVEMENT OF MONOPOLY.



A. E. PARTRIDGE, WHO TYPIFIES THE OPPOSING TENDENCY. ONE OF THE RULING SPIRITS OF THE GRAIN GROWERS' ASSOCIATION.

Volume 11

SEPTEMBER-OCTOBER, 1911

Number 5

Yearly Subscription \$1.00. Single Copies 25 cents

Publication Office, 150 Nassau Street, New York City

Digitized by Google
Original from
UNIVERSITY OF ILLINOIS AT
URBANA-CHAMPAIGN
SPECIAL NUMBER